

geotomographie

manufacturer of seismic borehole equipment



SBS1000 Magnum | P-Wave Source

Preliminary Information

The borehole source SBS1000 Magnum is designed for P-wave tomography between boreholes up to 1000 m depth.

The SBS1000 Magnum consists of three parts housing the complete high-voltage power supply for charging up to about 3 KV. The source can be connected to a GO-4 cable head and a standard logging unit (4-conductor cable). The unit is powered from surface by means of a 230 VAC power supply.

Technical Details

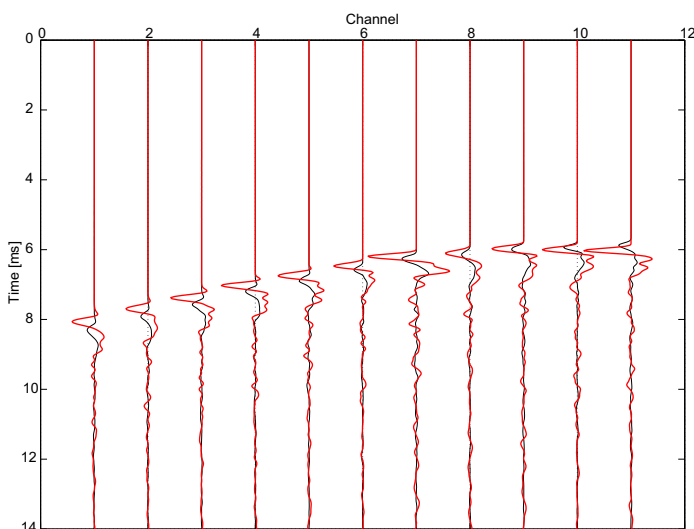
- Generated wave types:** P
- Signal frequencies:** Up to 5 kHz (depending on geology and borehole distance)
- Operational depth:** Up to 1000 m
- Power supply at surface:** 230 VAC
- Source diameter:** 70 mm
- Borehole diameter:** Min. 80 mm
- Signal transmission:** 4-conductor logging cable
- Cable head:** GO-4



P-wave source SBS1000 Magnum with winch.

Data Example (SBS42 vs. SBS1000 Magnum)

The example shows a comparison between our standard SBS42 P-wave source on a 100 m cable and the SBS1000 Magnum. Black signal traces belong to the SBS42 (100 m) and red signal traces to the new SBS1000 Magnum.



Amplitude vs. cable length

The plot shows the amplitude decay related to different cable lengths of the SBS42 P-wave source. The horizontal red line belongs to our new SBS1000 Magnum.

