

tomography



crosshole



downhole



surface seismic



# geotomographie

manufacturer of seismic borehole equipment



## BGK1000 | Borehole Geophone

The BGK1000 is a digital borehole geophone used to receive P- and S-waves in dry and water filled boreholes. The borehole geophone can be used for seismic downhole applications.

### Technical Details

**Natural sensor frequency:** 15 Hz  
(others on request)

**Sensor arrangement:** Tri-axial

**Power supply:** 12 V input 72 V output

**Operational depth:** Up to 2000 m

**Max. pressure:** 200 bar

**Temperature range:** 0-70 °C

**Receiver length:** 800 mm

**Receiver diameter:** 60 mm

**Receiver weight:** 8 kg

**Borehole diameter:** 75-200 mm

**Clamping system:** Motor-driven clamping arm

**Orientation:** Magnetic compass (+/- 2.5°)

**Communication:** 2 wire RS-485

**Downhole electronics:** DSP = Blackfin 548,  
64 MB SDRAM

**Cable head:** GO-4

### Digitisation

**Design:** Hinz Messtechnik GmbH

**A/D conversion:** 24 bit

**Sampling frequencies:** 250-48000 Hz

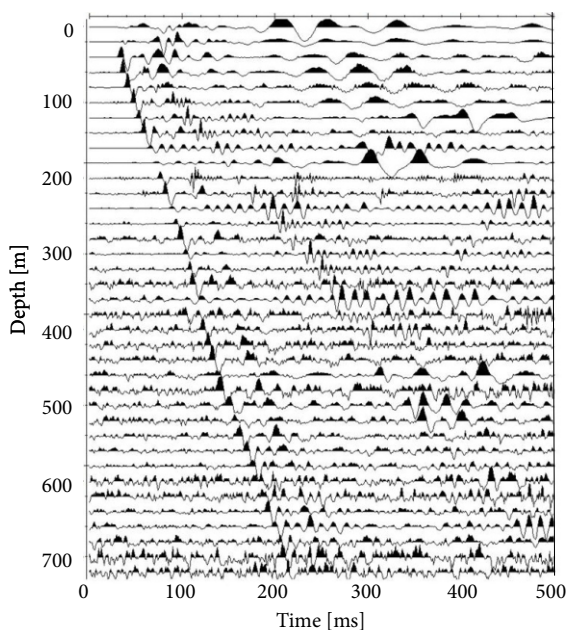
**Trace length:** Max. 21 s

**Trigger:** TTL, geophone, contact

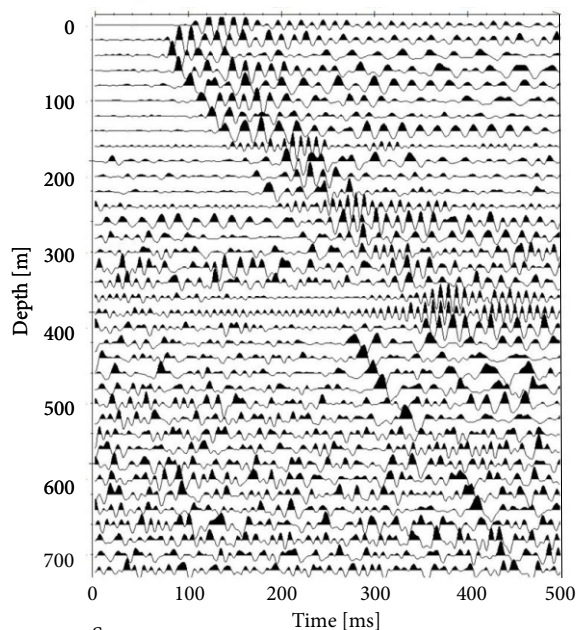
**Software:** SmartRec (Geotomographie)



### Data Example



P-wave  
Hard rock



S-wave  
Hard rock