



tomography



crosshole



downhole



surface seismic



geotomographie

manufacturer of seismic borehole equipment



## EIViS VII | Surface Vibrator Source

The vibrator source EIViS VII is used to generate P- or S-wave sweep signals. The source consists of a moving mass driven by a cascaded linear motor. The source is fully cased. An adjustable pneumatic suspension ensures a maximum release of seismic energy under different surface conditions. The source is most suitable for reflection seismic surveys on paved roads and for urban areas. A wheelbarrow allows the movement of the source along the seismic line.



### Technical Details

**Design:** Geosym GmbH

**Generated wave types:** P/S

**Power supply:** 12 or 24 V DC

**Drive system:** Cascaded linear motor

**Peak force:** Approx. 1100 N

**Frequency range:** 20-240 Hz

**Investigation depth:** Depending on geology

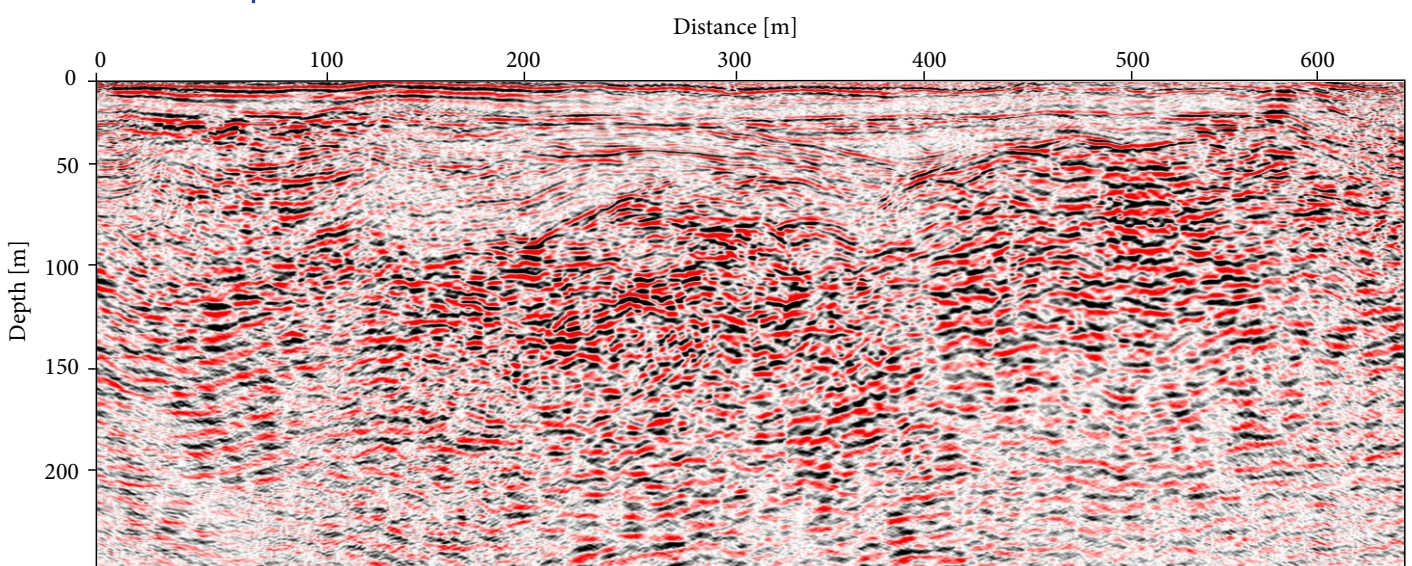
Up to 200 m and more for S-wave

Up to 300 m and more for P-wave

**Total weight:** 130 kg

The vibrator source with the horizontal vibrator kit (mounted).

### Data Example



S-wave reflection seismic section.